

# INTERNATIONAL 5.5 METRE CLASS ASSOCIATION



The following amendments to the Class Rules have been approved to be effective 1<sup>st</sup> March 2004.

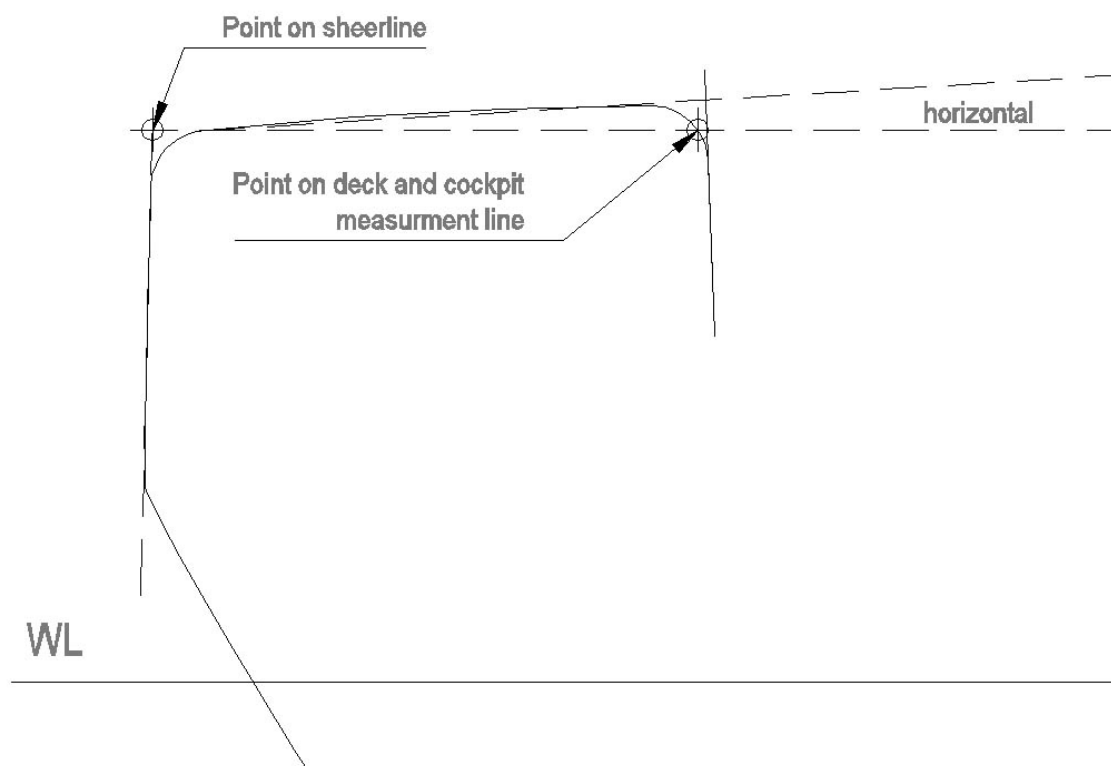
## Rule 11 – Deck Openings

**Amendment:** Add to end of current rule:

“...measured from the sheerline to the deck and cockpit measurement line.”

Delete “breath” and replace with “breadth”.

Add Figure 1:



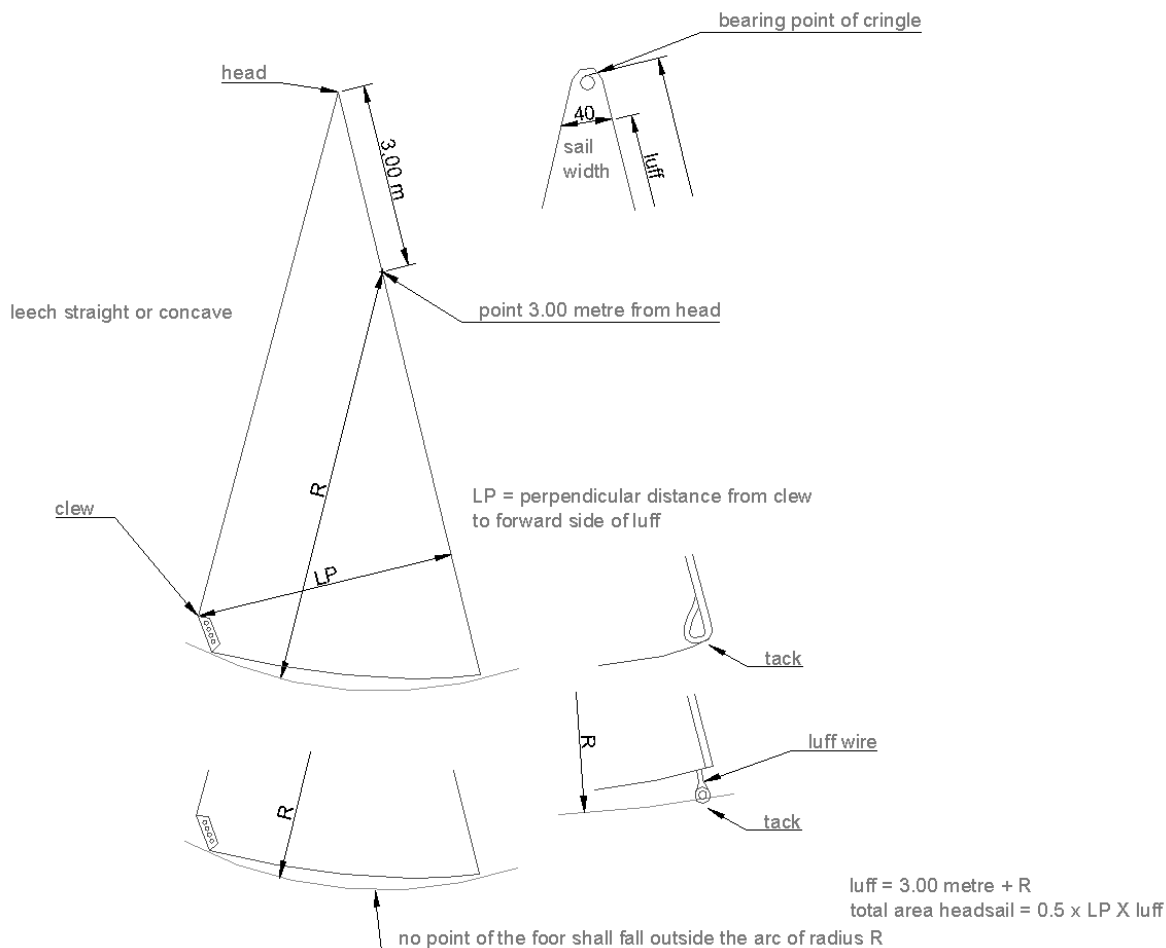
## Rule 33.2.14

**Amendment:** Delete current rule.

## Rule 17

**Amendment:** Add Figure: Sail Measurement – Headsail, including footnote as follows: “This amends IYRU Sail Measurement Instructions 1986.”

# INTERNATIONAL 5.5 METRE CLASS ASSOCIATION



## Rule 33.3.2

**Amendment:** Delete current rule and replace with the following:

“Modifications to the hull that may alter any of the dimensions on the last measurement certificate shall be approved by the class technical committee and ISAF.”

## Rule 15.6.6

**Amendment:** Delete in second sentence “Any” and replace with “All”.

## Rule 15.1.1

**Amendment:** Delete last sentence and replace with the following:

“The approval shall be given by an appropriate international measurer appointed by ISAF in consultation with the International Class Association.”

## Rule 15.1.2

**Amendment:** Delete last sentence and replace with the following:



“The survey shall be done by the same international measurer appointed by the ISAF.”

## **Rule 15.2**

**Amendment:** Delete the term “Technical Director” and replace with “international measurer”.

## **Rule 15.3**

**Amendment:** Delete the term “Technical Director” and replace with “international measurer”.

## **Rule 26.1.2**

**Amendment:** Delete “Technical Director or his appointed nominee” and replace with “International measurer”.

## **Rule 33.2.6**

**Amendment:** Delete current rule and replace with the following:  
“Keel: no alterations to the keel shape are allowed.”

## **Rule 33.2.9**

**Amendment:** Add “class” to the end of the last sentence.

## **Rule 33.2.11**

**Amendment:** Delete current rule and replace with the following:  
“Tolerance on the Displacement: the Classic boats are permitted to have a tolerance of +2.0% on the actual weight relative to the weight stated in the original certificate, but for measurement purpose, the displacement D in the rating formula must remain as on the original certificate. In the case of a boat whose displacement on the original certificate is already at the maximum permitted 2,050kg (2.00m<sup>3</sup>), it is permitted to apply the same tolerance, that is to 2,091kg.”

## **Rule 33.2.12**

**Amendment:** Delete current rule and replace with the following:  
“Tolerance on the Rating calculation: the Classic boats may have an increased sail area in order to measure 5.52 metre instead of 5.5 metre. For this purpose, the rating calculation shall incorporate the lengths, girths and displacements values from the original certificate.”

## **Rule 33.2.13**

**Amendment:** Delete in the first sentence, “are often not affecting” and replace with “do not affect”.

---

# INTERNATIONAL 5.5 METRE CLASS ASSOCIATION

